



INTERNATIONAL ROAD TRANSPORT IN SOUTH AMERICA

Planned routes to expand your efficiency –
connecting **Brazil, Argentina, Chile,
Paraguay, Peru, and Uruguay** with agility
and reliability.



www.maxitransgroup.com



[Click here and request your quote!](#)





Connecting Markets, MOVING SOUTH AMERICA

Count on a logistics partner that ensures on-time, reliable deliveries that meet your clients' expectations.

With Maxitrans, your business maximizes results!

+20

years of experience

+1500

satisfied clients

+7500

shipments completed

120M

tons shipped



www.maxitransgroup.com

Our Strength IN SOUTH AMERICA

A strong and strategic presence across the continent, connecting markets with **agility, capillarity, and logistics efficiency** at every border.



**Strategic Hubs
Brazil and the
Southern Cone**



**Integrated and
Dedicated
Regional Fleet**

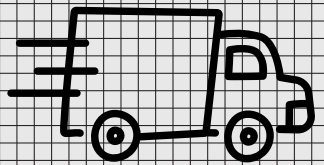


**Multicultural Team
International
Experience**



Routes That Connect **SOUTH AMERICA**

Experts in cross-border logistics, we connect **Brazil to Argentina, Chile, Paraguay, Peru, and Uruguay** with agile and reliable solutions for exports and imports.



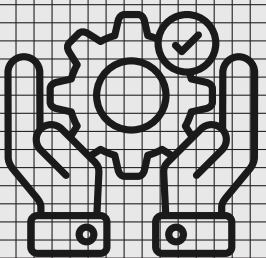
FTL, PTL, and LTL Operations

Partial, shared, or full truckload shipments with end-to-end traceability.



Agility and Performance

Routes planned for reduced transit times and regular departures.



Cross-Border Expertise

We facilitate trade integration between importers and exporters.



COMPLETE SOLUTIONS for your cargo

Maxitrans offers robust infrastructure for international road transport, ensuring efficiency and safety throughout South America.

We handle every stage of your shipment, from pickup at origin to final delivery at destination.



Deliveries and Pickups

We operate in LTL (less-than-truckload), PTL (partial truckload), and FTL (full truckload) modes, connecting Brazil, Argentina, Chile, Paraguay, Peru, and Uruguay.



Customs Clearance

Proactive management of customs procedures to speed up clearance, reduce bureaucracy, and avoid delays in your operation.



Door-to-Door

Full responsibility from start to finish: we ensure visibility, control, and security for your shipment from pickup to final destination.



Dedicated Team

International logistics specialists with continuous support, operating through our strategic HUBs.

Market Segments

Maxitrans serves multiple industries with customized logistics solutions for warehousing and domestic and international transportation.

Automotive



Textile



Food



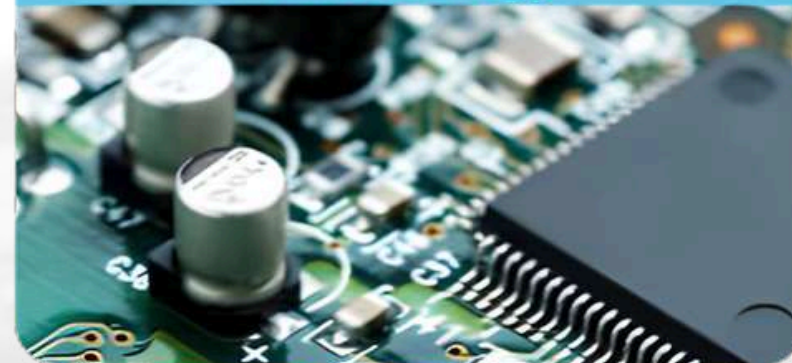
Drinks



Chemical



Technology



Energy



Agriculture



Hospital



Cosmetic



Industrial



Competitive Transit Times

Check delivery lead times for FTL, LTL, and PTL from different origins in Brazil. Lead times are counted from the weekly shipping date and do not include customs clearance.

Fixed weekly departures – the delivery lead time (D+X) is counted from the cut-off date of each route. Contact our team to confirm the departure day for your destination.

FTL – Full Truckload

Destination	RS/SC	PR/SP	SP int./RJ/MG
Montevideú	D+4	D+5	D+6
Santiago	D+8	D+10	D+12
Asunción PY	D+3	D+4	D+5
Buenos Aires	D+4	D+5	D+6
Lima PE	D+10	D+12	D+14

LTL / PTL – Partial and Consolidated Cargo (departures)

Destination	São Paulo and region	South region	Southeast region
Buenos Aires	weekly	weekly	biweekly
Rosário	weekly	weekly	biweekly
Santa Fé	weekly	weekly	biweekly
Córdoba	weekly	weekly	biweekly



Maxitrans: Connecting South America



Strategic Hubs

São Paulo, Santa Catarina, and Rio Grande do Sul as departure and arrival points for the entire regional operation.



Customs Efficiency

Customs transit system and dry port in Uruguiana as key partners for agility at Mercosur borders.



Integrated Vision

Reduction of costs and transit times, boosting trade between Brazil and all of South America.

We have operated since 2003 with regular routes across Mercosur — Argentina, Uruguay, Chile, Paraguay, and Peru — with a dedicated Double-Deck fleet, 24-hour satellite tracking, and the MIC-DTA customs regime.



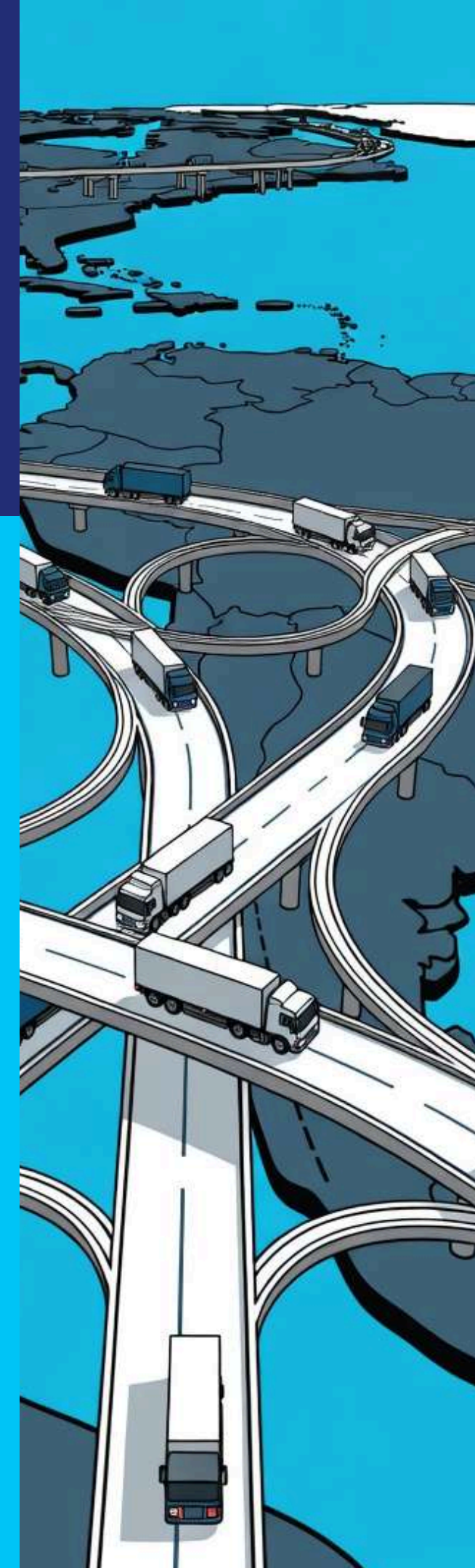
The customs service (customs brokerage and clearance) is not provided by Maxitrans, except in EXW operations.



Export/Import documentation is the client's responsibility and must be delivered at the border.



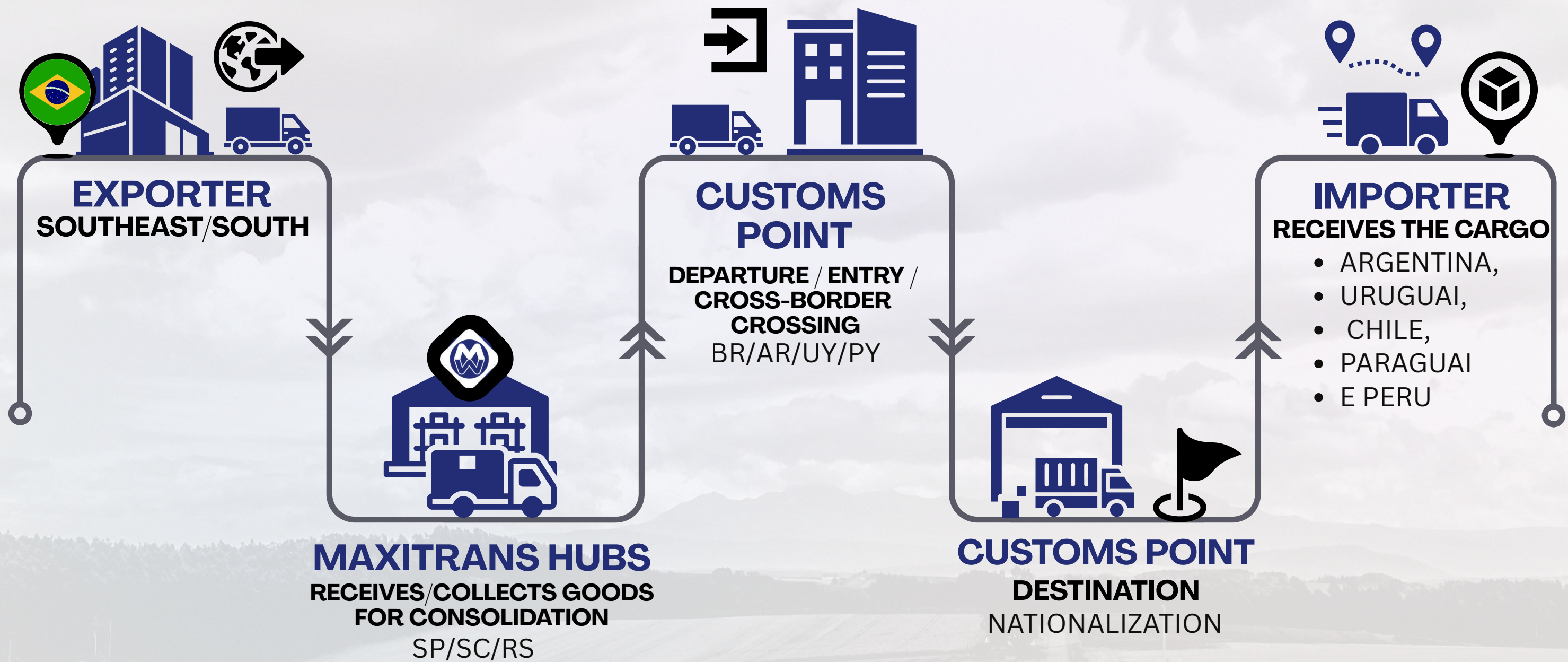
Tracked vehicles with 24-hour satellite monitoring. Exclusive service for legal entities (CNPJ).



ROAD LOGISTICS FLOW

Brazil ↔ South America

From consolidation at Maxitrans' strategic hubs to delivery in destination countries.



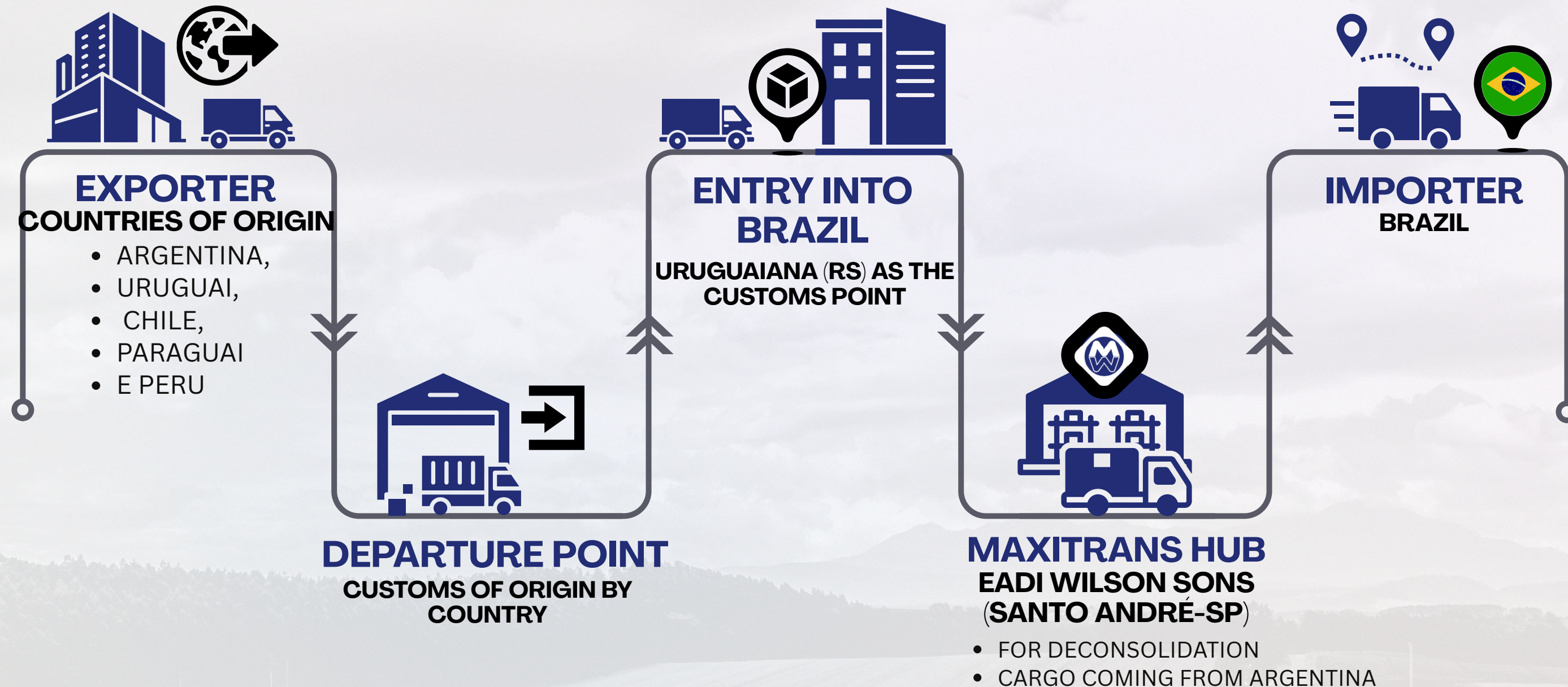
NOTES

- São Paulo (SP), Santa Catarina (SC), and Rio Grande do Sul (RS)
- Weekly LTL & PTL service available for Argentina; other countries upon request.

ROAD LOGISTICS FLOW

South America ↔ Brazil

From South American origins to deconsolidation at Maxitrans hubs and distribution in the Brazilian market..



ENTRY THROUGH BRAZIL: (RS AND PR) The dry port operates with robust infrastructure, including shipments under the customs transit regime. The MIC DTA system ensures the continuity of customs agility initiated in the country of origin.

Our Differentiators

Since 2003, Maxitrans has offered complete, reliable, and tailor-made logistics solutions for South America.



Fleet

Dedicated vehicles for cargo that cannot be stacked. Safety and cost savings in consolidated transport on the weekly Brazil ↔ Argentina route.



Regular Weekly Departures

Standardized road transport scheduling with fixed weekly departures for export and import. Guaranteed punctuality at destination.



24-Hour Satellite Tracking

Real-time monitoring of every stage of the journey. Full security and transparency for the client throughout the entire operation.



LTLMaxi — Consolidated Cargo

The ideal solution for companies of all sizes. Shared space with security, under the MIC-DTA customs regime, with no transshipment.



6 Strategic Offices

Presence in Brazil and across Mercosur, with hubs in Carapicuíba/S P and Itajaí/SC. Global network of agents for broad coverage.



Complete Multimodal

Domestic and international road transport (FTL, LTL, PTL), air, sea, and warehousing. Door-to-door solution with EXW customs management.





MAXITRANS ESG COMMITMENT

Maxitrans adopts the **ESG (Environmental, Social, and Governance)** model as a strategic pillar, going beyond financial results to promote responsible and sustainable practices throughout the entire logistics chain.



Environmental

Committed to reducing environmental impact in operations. IBAMA certification (AATIPPCR), partnership with Ambipar, and waste management practices throughout the entire chain.



Social

Support for GRAACC and Fundação ABRINQ (Child-Friendly Company). An organizational culture based on ethics, respect, and social responsibility with all stakeholders.



Governance

Code of Culture and strong values: Excellence, Innovation, Trust, Responsibility, and Collaboration. Certifications: ANVISA, D-U-N-S, Civil Police, and Brazilian Army.



Vision 2028

To become the leading consolidator of road cargo in Mercosur by 2028, with efficient and innovative solutions that exceed the expectations of clients and partners.



Shall we move *your* business?

Since its founding, Maxitrans Group has connected companies to Mercosur with excellence, safety, and punctuality. Our expertise in international transport ensures reliable, efficient operations aligned with each client's needs.

We invite you to speak with our team and request a customized quote for your transport and logistics operations.

Maximizing concepts, evolving businesses



Website:
www.maxitransgroup.com



Matriz:
Osasco/SP — Av. Hilário Pereira de Souza, 406/492 – Torre 2



E-mail:
contato@maxitransgroup.com



WhatsApp:
[+55 11 99700-1357](https://wa.me/5511997001357)



[Click here and request your quote!](#)

